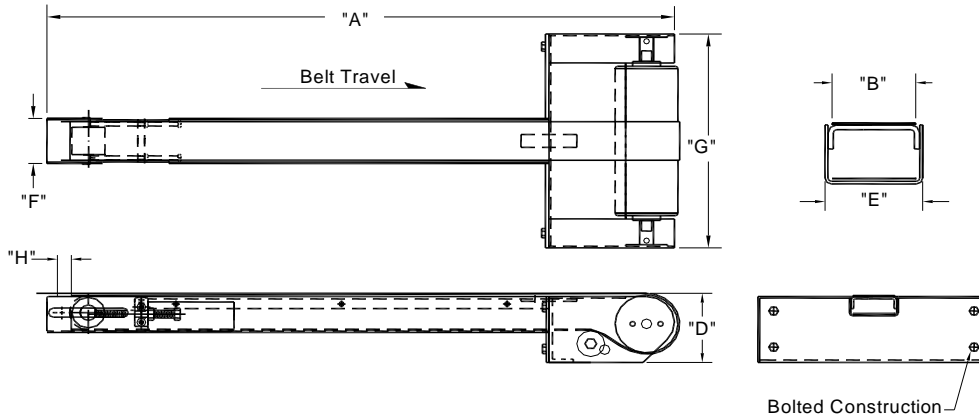


**GLM Medium Duty**



**POWER-PACK® Standard Conveyors - built the way you want them...**

	Field Info Required	Data		Field Info Required	Data
A.	Conveyor Length O.A.			Total Load On Conveyor	
B.	Belt Width			Belt Speed In Fpm	
				Power: Volts, Phase, Hz	
	Product Being Carried:				
	Adverse Condition If Any:				
<b>Power-Pack will size for application</b>					

	Dimensions	Belt Width +		Medium	
D.	Body Height			5.5"	
E.	Body Width O. A.	Belt +		0.5"	
F.	Tail End Width O. A.	Belt +		0.5"	
G.	Drive End Width O. A.	Belt +		10"	
H.	Belt Tension Take-Up Adjustment			2"	
	Drive & Tail Pulley : <b>Crowned</b>			2.375"	

<b>Standard Features</b>					
	Body Construction : <b>Mild Steel</b>			Bed Type : <b>Slider</b>	
	Belt Type : <b>PVC</b>			Belt Lacers: <b>Endless Finger Splice</b>	
	Motor-Reducer Style : <b>TEFC-Shaft Mounted</b>			Bearings: <b>Greased Sealed, Self Aligning</b>	
	Motor Location : <b>Left Side</b>				
<b>See options section for additional features</b>					

**Power-Pack® Conveyor Company**  
 38363 Airport Parkway • Willoughby, OH 44094  
 Phone: (440) 975-9955 • Fax: (440) 975-0505  
 Website: [www.power-packconveyor.com](http://www.power-packconveyor.com)  
 Email: [ppcc@power-packconveyor.com](mailto:ppcc@power-packconveyor.com)



**Safety Features:** *Patented Concealed Bearings,*  
*Patented Concealed Drive & Tail Rolls,*  
*Patented Boltless, Bearing Slide Mounts*