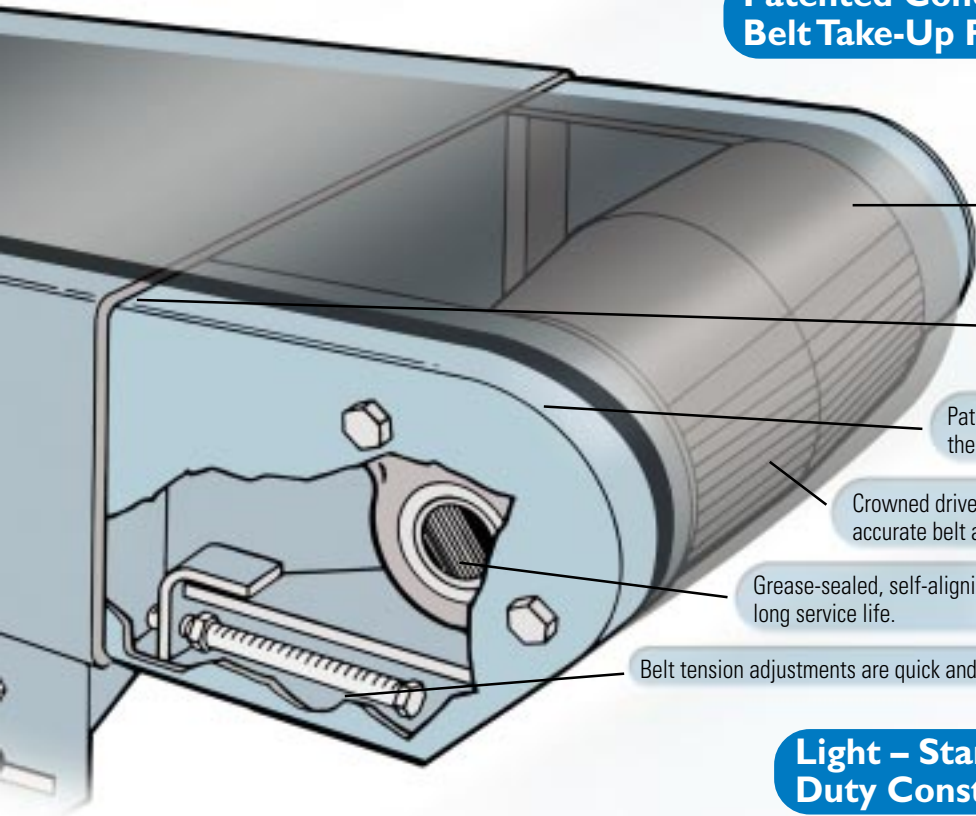


# UNIQUE DESIGN FEATURES

Throughout the Power-Pack line of products and systems, you'll find many innovations:

## Patented Concealed Drive and Belt Take-Up Pulley Assemblies



Streamlined design with concealed drive and belt take-up pulley eliminates hazardous pinch points for operator safety.

Rugged formed and welded steel construction prevents flexing and twisting.

Patented slide-in design eliminates the need for mounting bolts.

Crowned drive and take-up pulleys provide accurate belt alignment for maximum belt life.

Grease-sealed, self-aligning bearings for long service life.

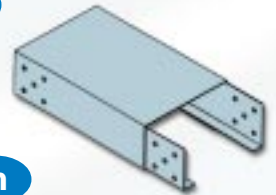
Belt tension adjustments are quick and easy to make.

## Light – Standard – Heavy Duty Construction

Power-Pack's standard line of conveyors are offered in welded or universal construction.

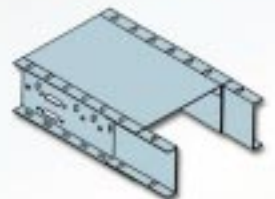
### Welded Construction

Power-Pack's welded construction conveyors feature a one-piece formed body for maximum strength.



### Universal Construction

A common channel conveyor frame with a bolt together design and interchangeable components is used for 11 universal models. It provides economy and durability while offering the flexibility of easily changing from model to model by only purchasing the components needed to change your existing conveyor into the model your production now requires.



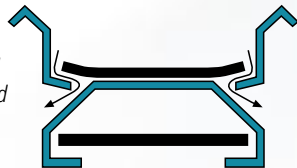
## ComPac™ Motorized Drive Pulley



*This drive's space-saving design is ideal for a variety of applications where the use of an external chain drive just isn't practical such as assembly lines. It's available in a wide selection of horsepower ratings and belt speeds to meet virtually every need.*

## Self-Cleaning Body

*This self-cleaning body eliminates belt jamming caused by conveying small parts. Should a part or material work its way under the belt, it falls freely away.*



## Low Pressure Accumulation

Power-Pack's low pressure sleeves provide simple and virtually maintenance-free low pressure accumulation of pallets and products – all while prolonging roll life.

